



To CDS Subcommittee **Date** November 14, 2011

From P. H. Grau **Reference** 11-999/SMA-659 lth
pgrau@arinc.com
tel: +1-410-573-3154

Subject **Meeting Announcement**
Cockpit Display Systems (CDS) Subcommittee

When February 21-23, 2012 from 0900 to 1700 daily

Where Meeting Location
Rockwell Collins
1100 W. Hibiscus Blvd.
Building 307 Purple Conference Room
Melbourne, FL 32901
tel: +1-321-725-0800
Point of contact:
Chad Weldon (Cedar Rapids Office)
tel: +1-319-295-3901
email: cmweldon@rockwellcollins.com
Meeting attendees must RSVP to **Chad Weldon before January 31, 2012.**

Hotels A variety of hotels are available near the Rockwell Collins facility to meet your budget and comfort needs. A list of hotels is attached to this announcement. A map showing nearby hotels and directions to Rockwell Collins is also attached.

Instructions Please notify ARINC Industry Activities of your intention to attend by registering online at:
<http://www.aviation-ia.com/events/>
Dress code for this meeting is business casual.
If you wish any material to be circulated prior to the meetings, please submit your proposals via e-mail to Peter Grau by **January 31, 2012.**
The meeting is open to all interested parties. Individuals requesting time on the agenda should contact Peter Grau (pgrau@arinc.com). The agenda will be finalized one week prior to the meeting.

Rockwell Collins is a secure facility. Visitors will need to present their passport as identification to obtain a guest pass each day. Visitors must also provide the following information to **Chad Weldon** (cmweldon@rockwellcollins.com) **before January 31, 2012:**

1. Full Name
2. Company
3. Citizenship
4. Email Address
5. Phone number

Meeting Objectives

Cockpit Display Systems

The CDS Subcommittee will meet February 21-23, 2012 in Melbourne, Florida. The meeting will be hosted by Rockwell Collins. The purpose of the meeting is to review inputs to Supplement 5 to **ARINC Specification 661: Cockpit Display System Interfaces to User Systems**.

Supplement 5 will add new material as follows:

- Alignment Field for PopUpMenu, Independent LegendString and for EditTextNumeric and EditTextNumeric-Binary Coded Decimal
- Complex Interactive Formats
- Widget Structure Meta-Definition
- User Application Definable Map Symbol Parking Boundaries
- Combining Digital Maps with other Map Layers
- Operation of the kRepeat Character
- Digital Map Widget
- User Application Controlled Focus Navigation
- Widget Extensions
- FocusIn-FocusOut/ FocusLink Modifications
- Multiple Selections in a List of Items
- Multi-Touch and other effects of Touchscreen Technology
- FillGradient Widget Extension
- gpPolyLine Widget
- Paging Container Widget
- Scaled Translation Container Widget
- Numeric Readout Widget
- Image Viewer Widget
- Scaled Rotation Container Widget
- New Characters for the Character Set
- Focus Navigation for PopUpPanelButton
- Miscellaneous document clarifications
- Look Modeling
- Other Miscellaneous items TBA

The goal is to reach consensus on the content of material that will be included in Supplement 5.

**Travel
Information**

The Rockwell Collins facility is located in Melbourne, Florida. It can be accessed from either Melbourne Airport or Orlando Airport. The map attached to this announcement provides directions. Travel time to/from Orlando (MCO) is approximately one hour by rental car.

cc

SAI

Melbourne Hotels

Courtyard Melbourne West

2101 W New Haven Avenue

Melbourne, Florida 32904

321-724-6400

<http://www.marriott.com/hotels/travel/mlbch-courtyard-melbourne-west/>

Crown Plaza Melbourne Ocean Front

2605 N Hwy A1A

Melbourne, Florida 32903

321-777-4100

<http://www.crowneplaza.com/hotels/us/en/melbourne/mlboc/hoteldetail>

Hilton Melbourne Rialto Place

200 Rialto Place

Melbourne, Florida 32901

321-768-0200

http://www1.hilton.com/en_US/hi/hotel/MLBMHFF-Hilton-Melbourne-Rialto-Place-Florida/index.do

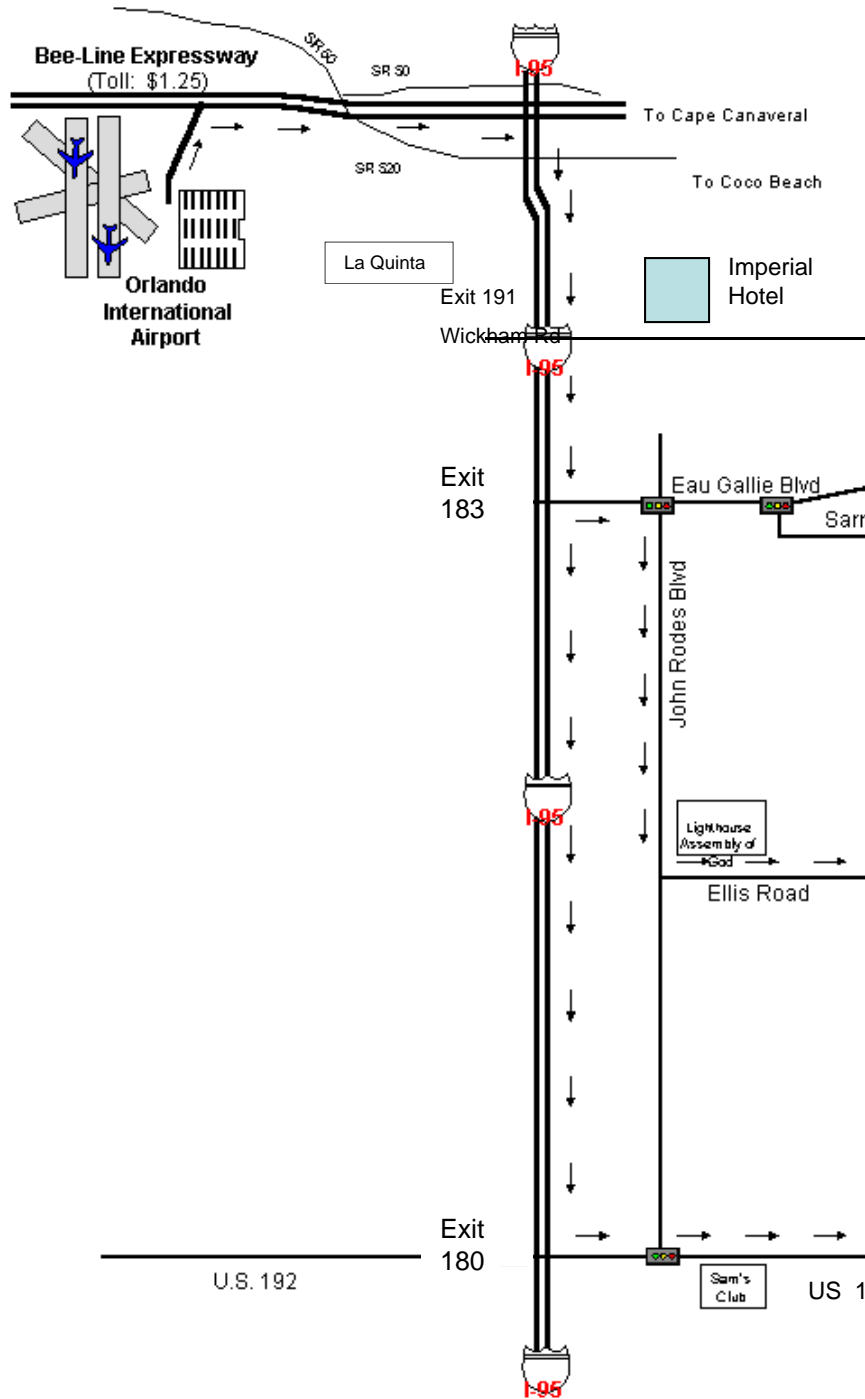
Radisson Suite Hotel Oceanfront

3101 North Highway A1A

Melbourne, Florida 32903

321-773-9260

<http://www.radisson.com/melbourne-hotel-fl-32903/melbourn>

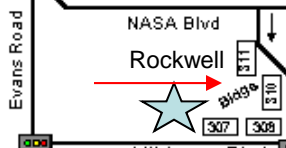
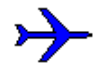


Melbourne Area Map

(Route from Orlando International Airport to Rockwell Facilities - Approx 60 miles)



1100 W. Hibiscus Blvd.
Melbourne, Florida
Phone: (407) 768-7400



There are two other stop light between these two points not shown on map

Courtyard by Marriott

There are other stop light between these two points not shown on map